



**SUNIT CONCRANES**

---

**KEY PROJECTS**



# JSPPL, Raigarh

---

## 4 x 135 MW Project

Complete Coal Handling Plant comprising Belt Conveyors, Impact Crushers, Stacker and Reclaimer, Vibrating Screen, Coal sampler unit

**Belt Conveyor Capacity: 1300 TPH**

**Bunker Level: 52 Metres**



# JSW - BELLARY

---

## Chain Conveyor

Carrying Sinter Dust from ESP Hopper to Silo Inlet

**Chain Conveyor: 82 Degree Inclination**

**Elevator Height: 52 Metres**



# KCM - Zambia

---

## Belt Conveyors

South Africa's biggest moving conveyor with no ground supports for tripper conveyor discharging into Shuttle Conveyor

**25 Belt Conveyors with Capacity: 1500 TPH**

**Grinder Span: 45 M | Travelling Length: 135 M**



# Shrijee Process Engineering Works Ltd - France

---

## **Lime Screw Conveyor**

Screw Conveyor Capacity: 10 TPH



# Shrijee Process Engineering Works Ltd - Indonesia

---

## **DG EOT Crane**

35/5 TON

45/5 TON



# **JSPL - Angul**

---

# **Conveyors**

Pallet Handling Conveyors System and DRI  
Conveyors System



# Ambuja Cement - Bhatapara

---

## **Lime Stone Handling**

63 M long single gantry supported on only 2 columns at the end





# Vizag Port Trust

---

## Conveyors

Ship Unloading Conveyors of 500 M length at  
3000 TPH capacity with Steel Chord Belt



# Vedanta

---

## Iron Ore & Coke Oven Project



# Privi Life Sciences Pvt Ltd

---

Coal Handling Systems



# PES ENGINEERS PVT LTD

---

## FGD Systems

NTPC - Singareni Super Thermal Power  
Station Project

**Lime & Gypsum Handling: 150 TPH  
Capacity Conveyors**



# Bihar Foundry & Casting Ltd

---

## **Wet Scraper Conveyor**

1600 x 1600 x 16000 mm

**Capacity: 20 TPH**



# Super Smelter Limited

---

## Pug Mill

**Capacities**

**30 TPH FOR DRI**

**20 TPH for Pallet Plant**



# Rungtha Mines Limited

---

## **Wet Scraper Conveyors**

900 TPD Sponge Iron Plant

**Capacity: 20 & TPH**



# Neo Metallics Limited

---

## Grab Bucket Crane

900 TPD Sponge Iron Plant

**Capacity: 20 & TPH**





# Jindal Stainless Ltd

---

## Cast Basalt

**Cast Basalt Tile Cast 200 X 200mm thk  
30mm thick**



# Tempo Steel - Uganda

---

## **Wet Scraper Conveyors**

500 TPD Sponge Iron Plant



# Provo Speciality Chemicals

---

Pneumatic Ash Handling System

**Capacity: 55 TPH**



# Arya Engineers & Contractors Private Limited

---

## **Drag Chain Conveyors**

Capacity: 12 TPH



# Harsco India Ltd

---

## **Pug Mill**

For Vizag Steel Plant

**Capacity: 150 TPH**



# Jayaswal Neco Industries Ltd

---

## **Drag Chain Coal Feeder**

Capacity: 20 TPH



# Tenova Technologies Pvt Ltd

---

## **Belt Conveyors & Bucket Elevator**

For Tata Mehramandli Project



# Mahagenco - Koradi

---

**Dust Extraction System of 83000 m<sup>3</sup>/hr**

Super Thermal Power Station

**Capacity: 3 x 660 MW**





# IJT - Noida

---

## **Ash Handling System**

900 Degree Celsius Temperature  
for I Power Philippines



# JNK India LTD

---

## **Belt Conveyors**

For Tata Joda Projects

# OUR CLIENTELE



Jindal Stainless Ltd



Shrijee Process  
Engineer Works Ltd



Orissa Sponge Iron  
and Steel Ltd



JNK India Pvt Ltd



PRIVI SPECIALITY CHEMICALS LIMITED



SUPER SMELTERS LTD.



Tenova Technologies Pvt Ltd



Rungta Mines Ltd.



Harsco India Pvt Ltd



Adhunik Metaliks Ltd

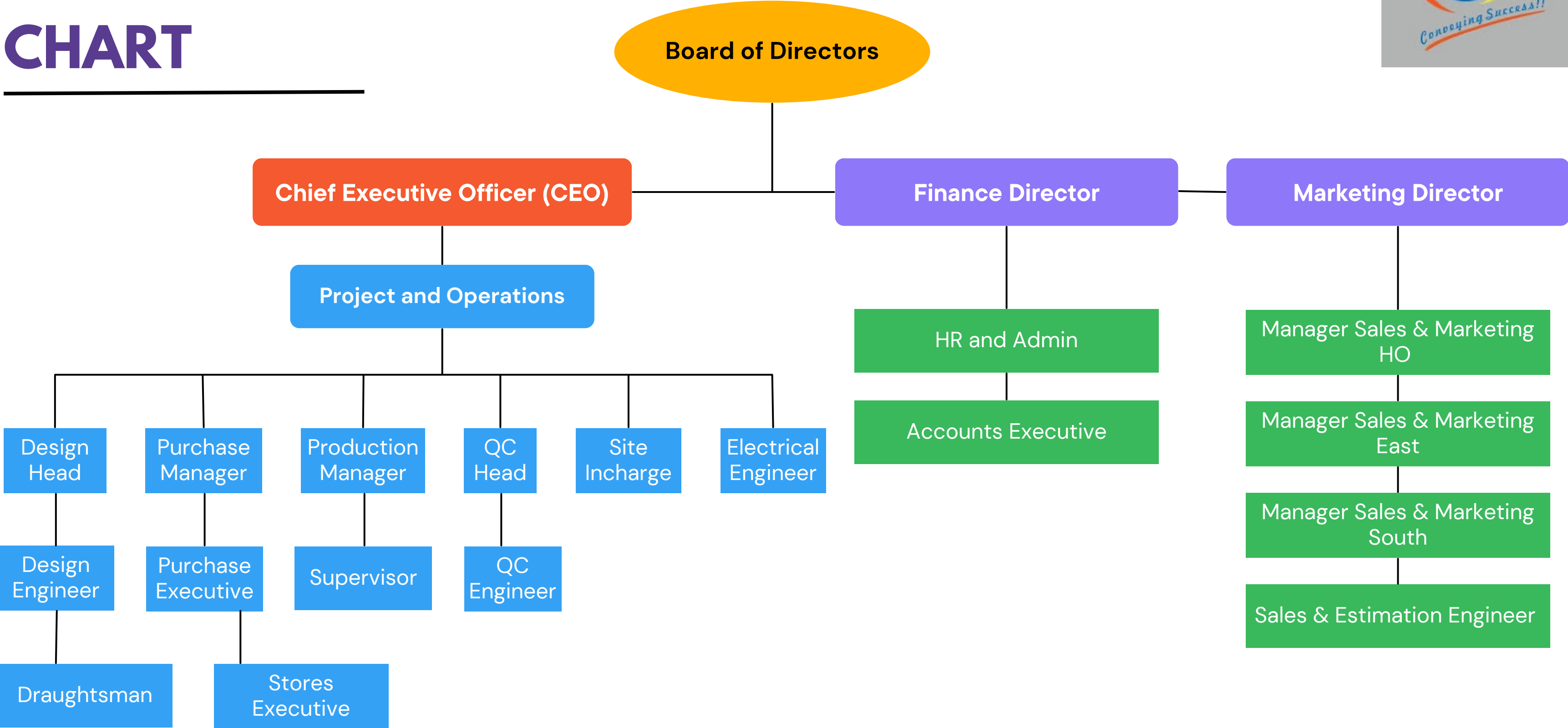


**WE PROVIDE  
WORLDWIDE  
SERVICES**

---



# SUNIT CONCRANES ORGANIZATION CHART





# OUR PRESENCE



**GOOGLE**



**FACEBOOK**



**INSTAGRAM**



**LINKEDIN**



**[sunitconcranes.com](http://sunitconcranes.com)**



SUNIT CONCRANES PVT LTD

## Contact Us

We're here to assist you!  
Reach out for appointments,  
inquiries, or any needs related to  
our business.

Let's make a positive impact  
together.



+91 9422008147



[sunitconcranes.com](http://sunitconcranes.com)



[marketing@sunitconcranes.com](mailto:marketing@sunitconcranes.com)

THANK  
YOU!

